

Arabian Maps Aerial Imaging Co.



شركة الخرائط العربية للتصوير الجوي
ARABIAN MAPS AERIAL IMAGING COMPANY

ABOUT ARABIAN MAPS AERIAL IMAGING (AMAI)

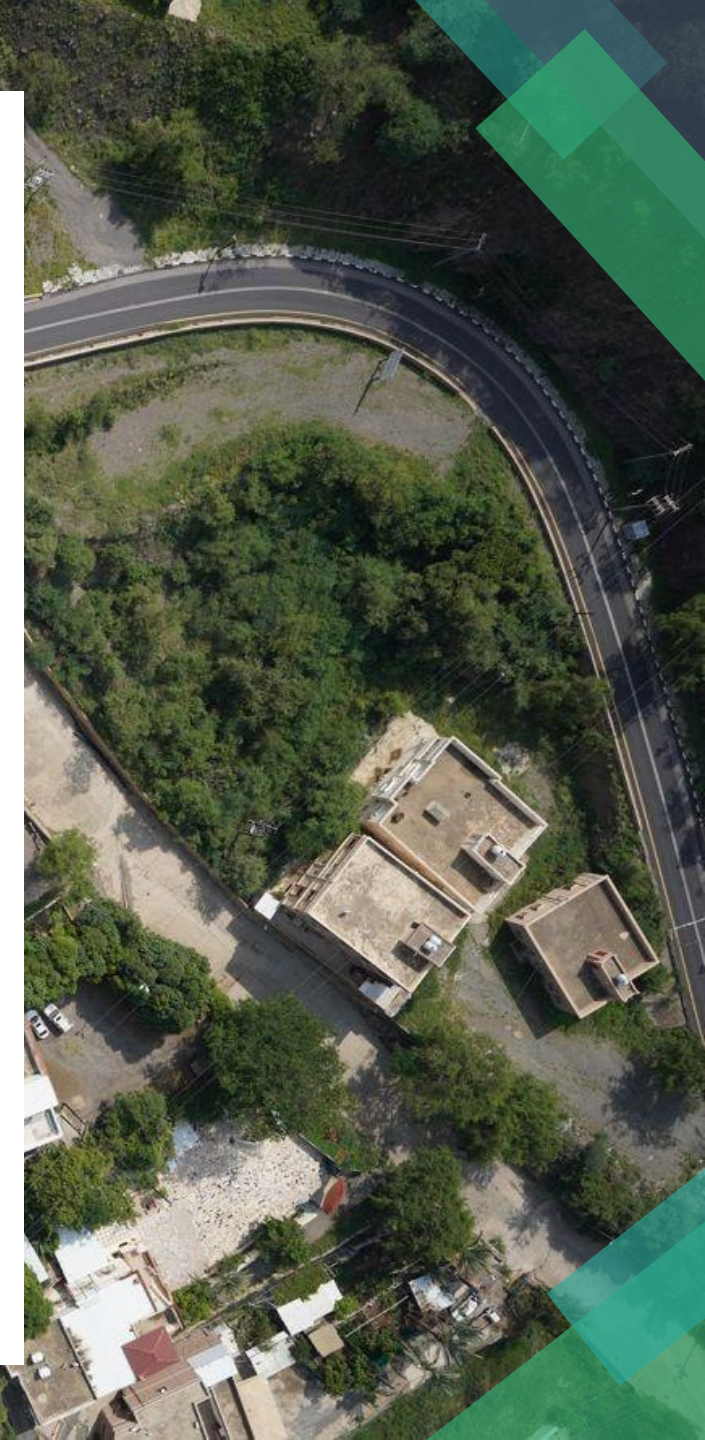
Arabian Maps Aerial Imaging (AMAI) is a full-service Aerial Survey & Geospatial Solutions provider based in Riyadh- Saudi Arabia .



AMAI owns and operates several Vertical Takeoff and Landing UAVs equipped with high resolution cameras (42 and 61 MP) for Drone SurveyZ

These drones able to provide from 1cm up to 10 cm resolution imagery.

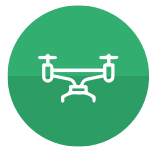
IN AMAI, we are relying on a high qualified team with a core specialization in Aerial survey and mapping solutions



AMAI CAPABILITIES



AMAI have all the necessary licenses, certificates and permits (pilots and drones) to conduct the drone survey projects



AMAI won and operate a several Vertical Takeoff and Landing UAVs equipped with high resolution cameras (42 and 61MP) for aerial survey (Nadir and Oblique)



AMAI have several workstations with high specifications and the required software for data processing and production



AMAI's team have high capabilities and experiences in data acquisition missions, processing and production

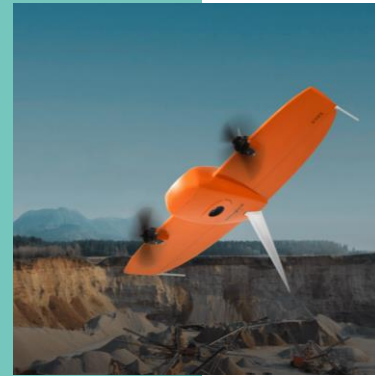
AMAI DRONES



RGB61 - High-resolution mapping camera



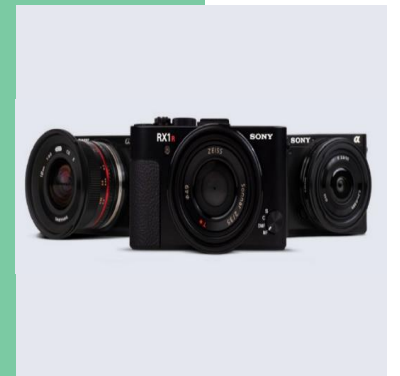
Wingtraone with high capabilities for mapping production and topographic survey



Wingtraone G2 with high capabilities for Oblique survey



DJI Mavic 3 pro



Oblique camera for the most detailed 3D

KEY CLIENTS

AMAI has been honored to implement a several drone topographic survey projects with the following clients.



AMAI's SERVICES

AMAI is honored to provide the following services

Topographic Survey by Drones	Mapping Production Using Drones	Oblique Survey by Drones
Inspection by Drones for Transmission Power Lines, Towers, Industrial Facilities	Projects Monitoring Progress by Drones	Land Survey



AMAI's OUTPUTS

AMAI is honored to provide a rich products for its clients as below list



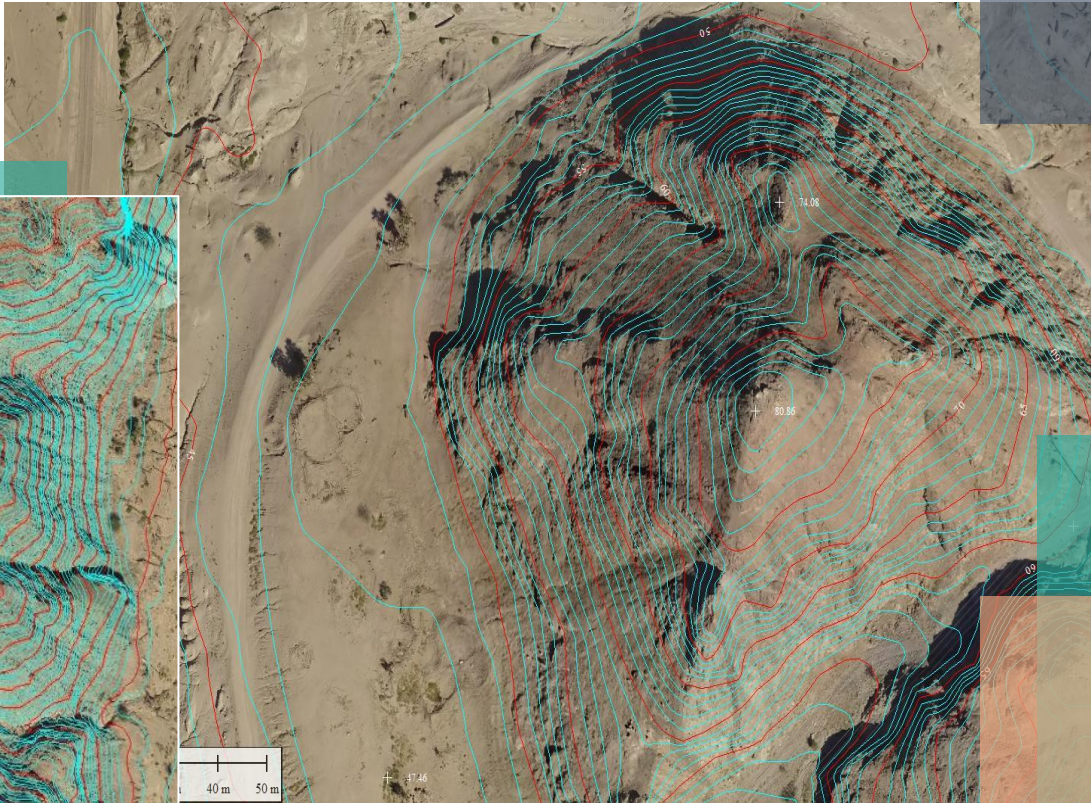
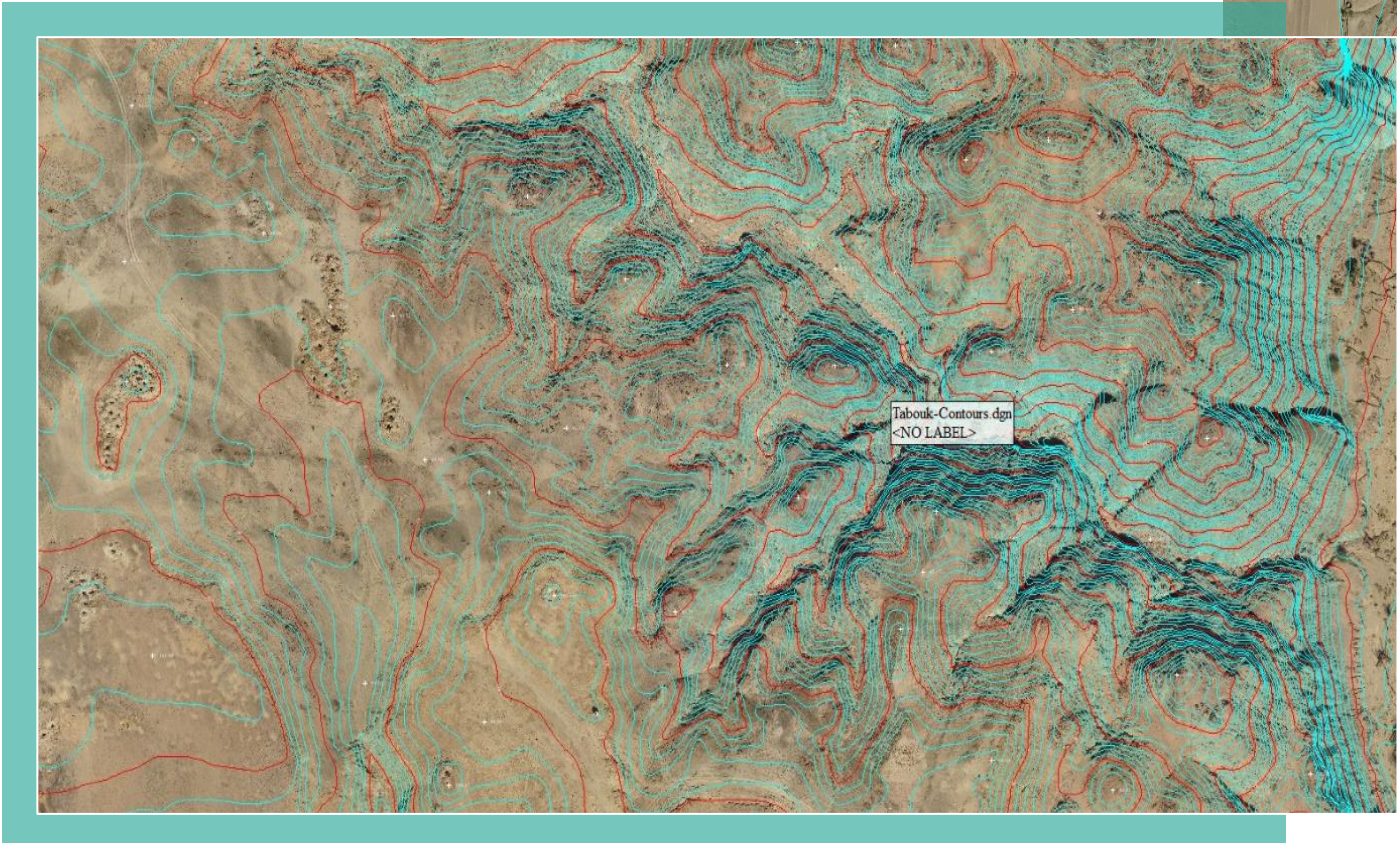
Orthophoto

AMAI's OUTPUTS



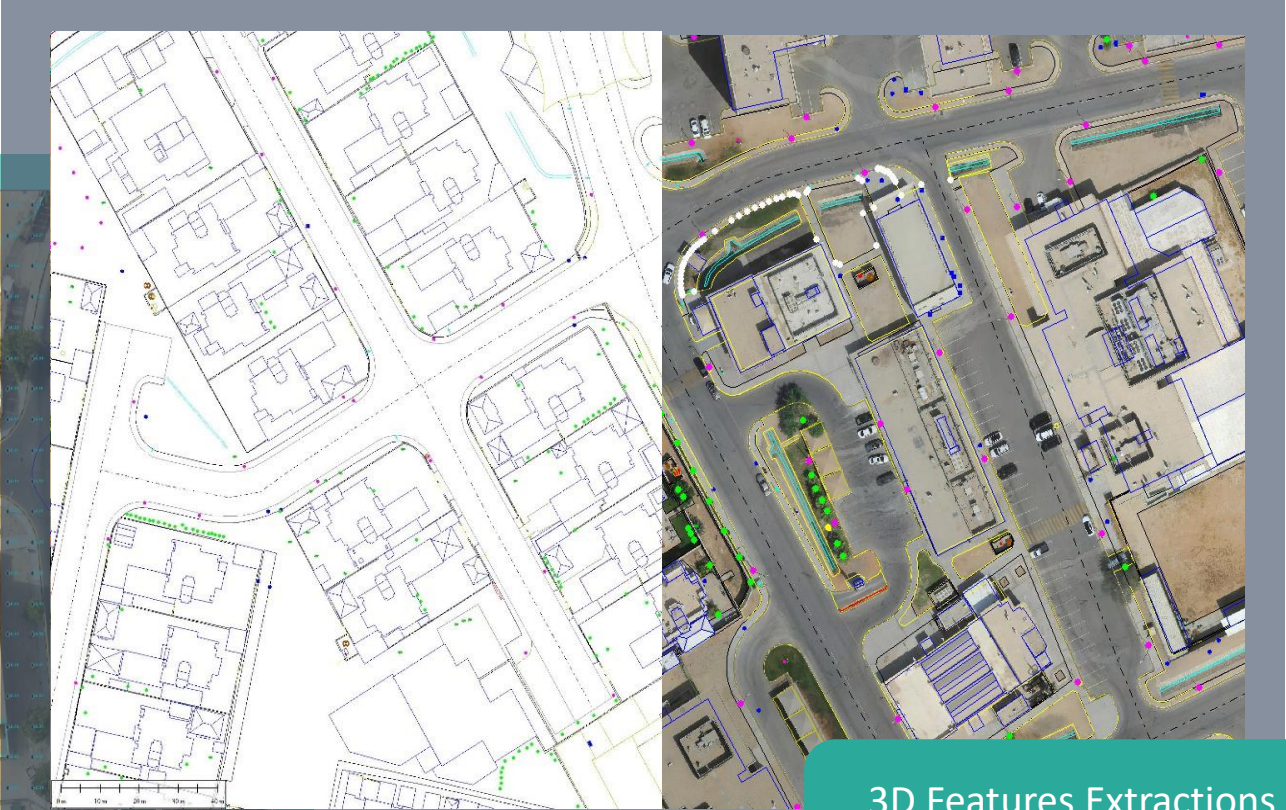
True Orthophoto

AMAI's OUTPUTS



Contour Lines

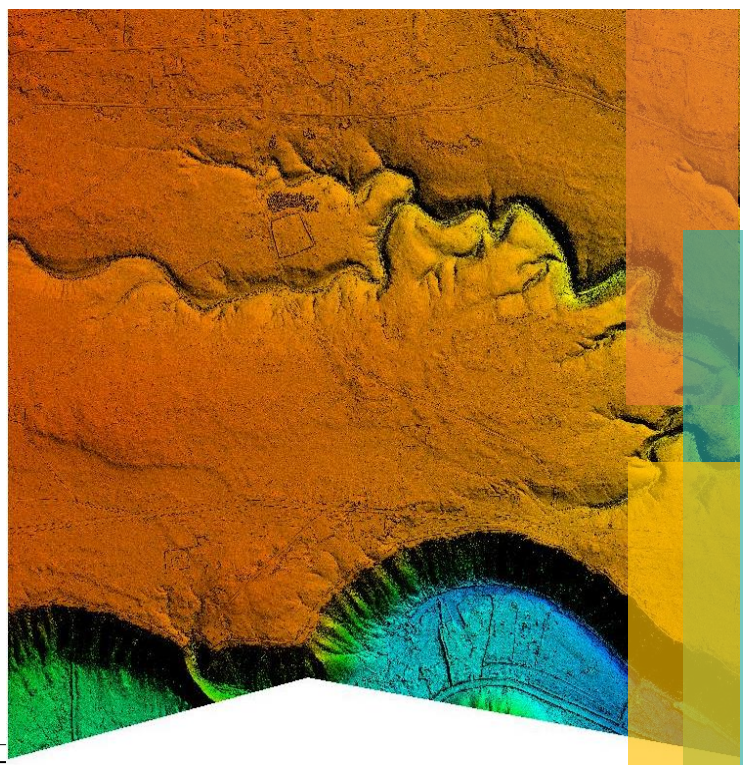
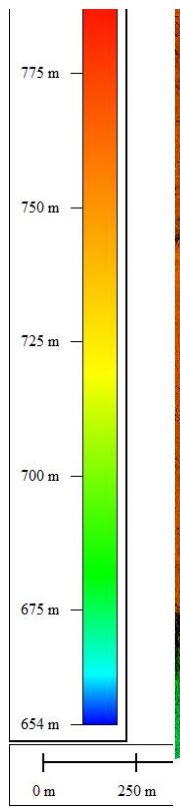
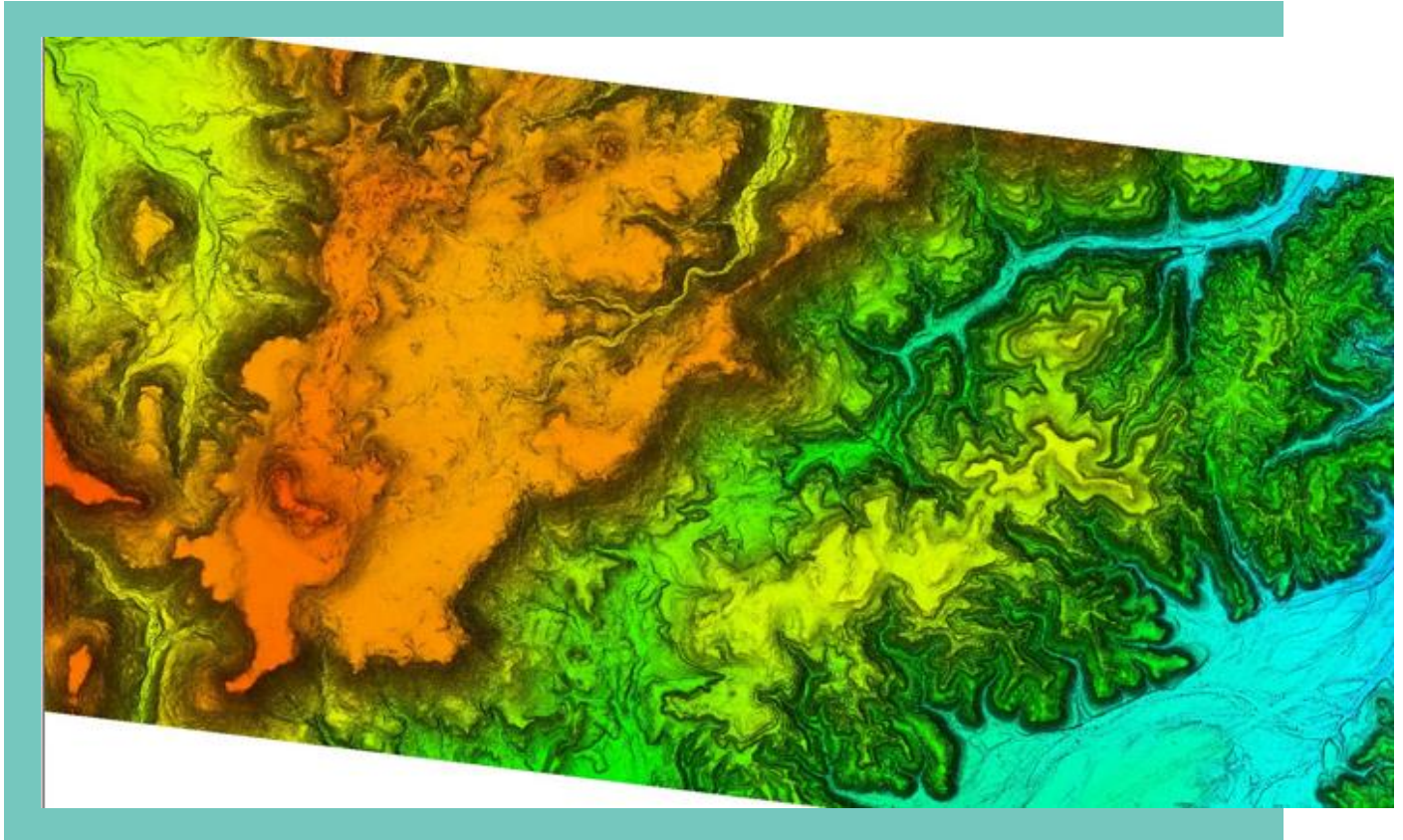
AMAI's OUTPUTS



3D Features Extractions and Plan Data Generation

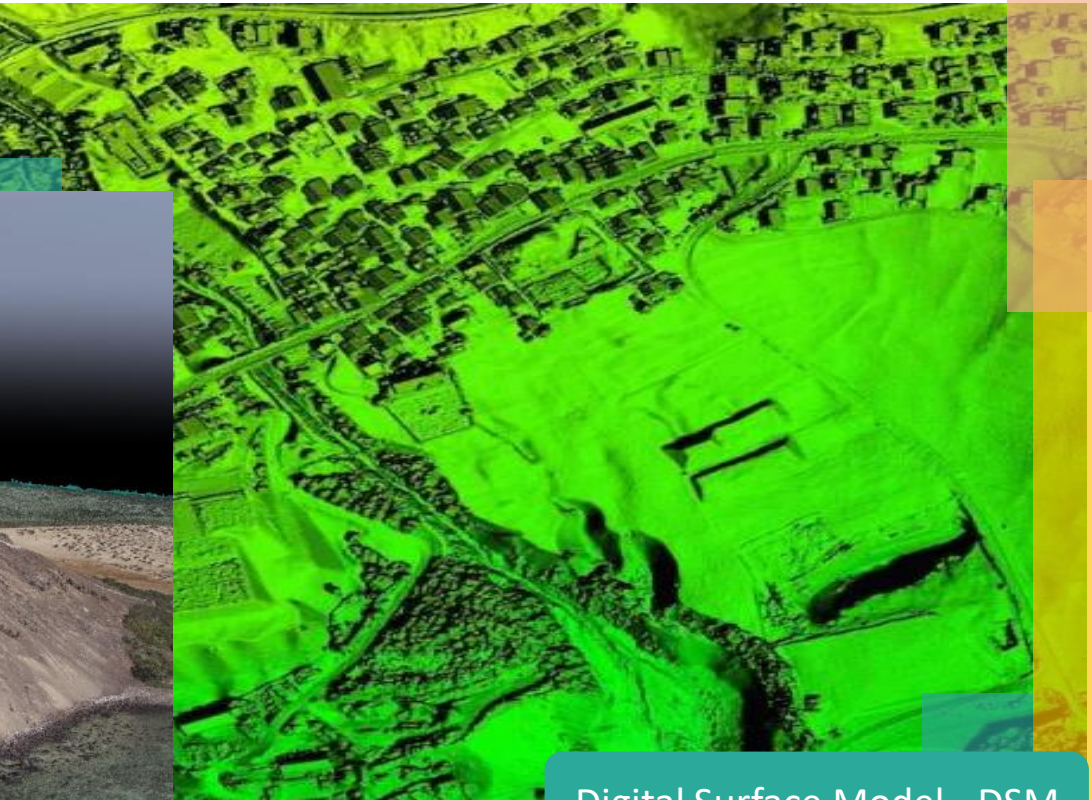
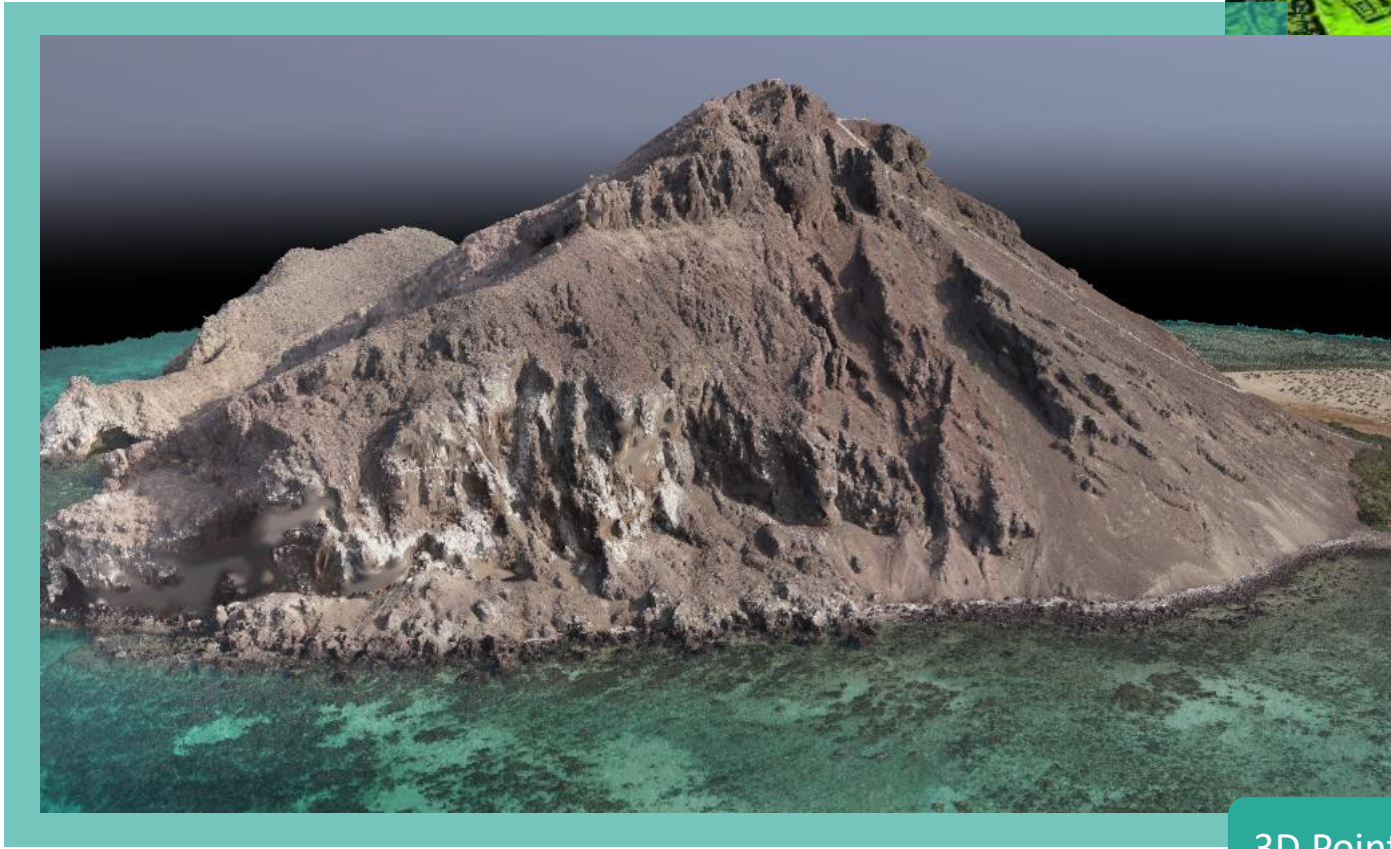
Grid Points

AMAI's OUTPUTS



Digital Elevation Model - DEM

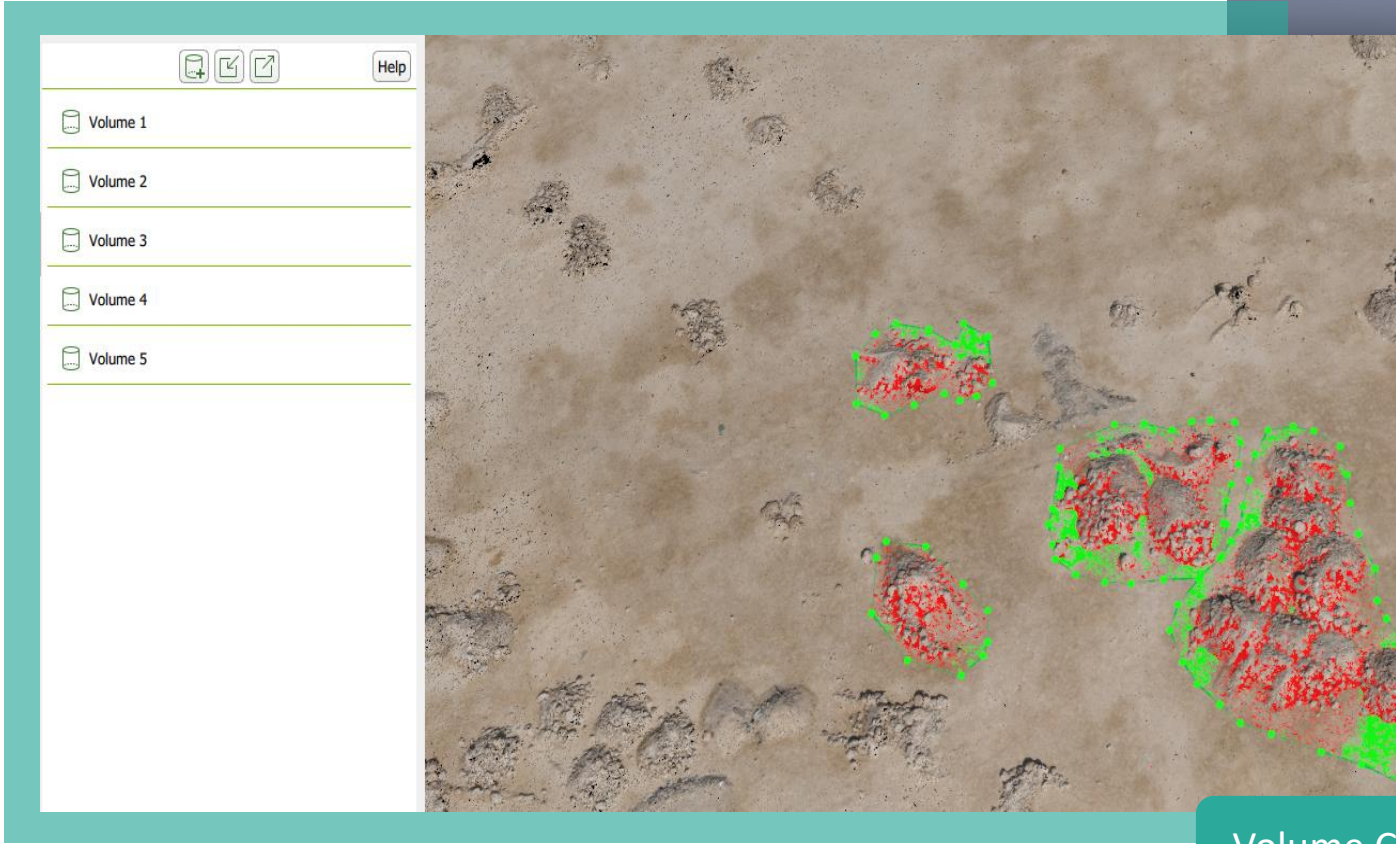
AMAI's OUTPUTS



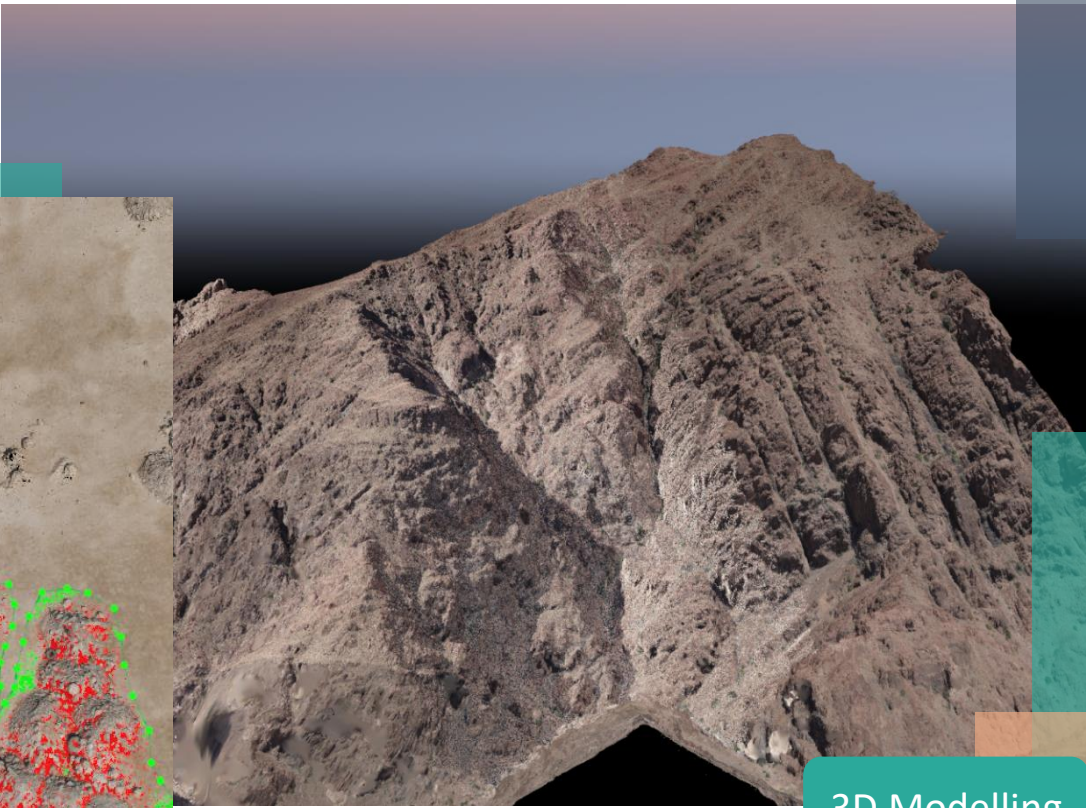
3D Points Clouds

Digital Surface Model - DSM

AMAI's OUTPUTS



Volume Calculation



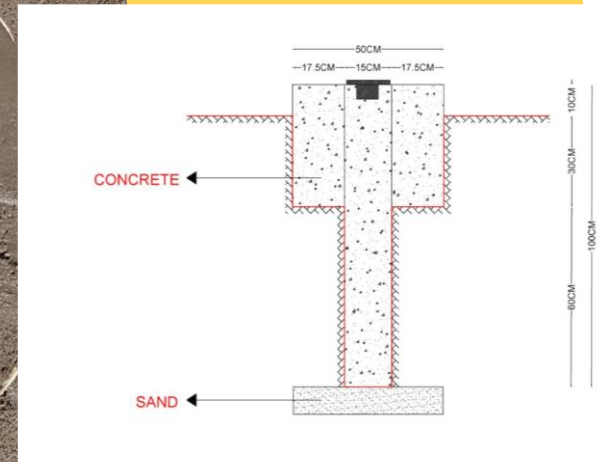
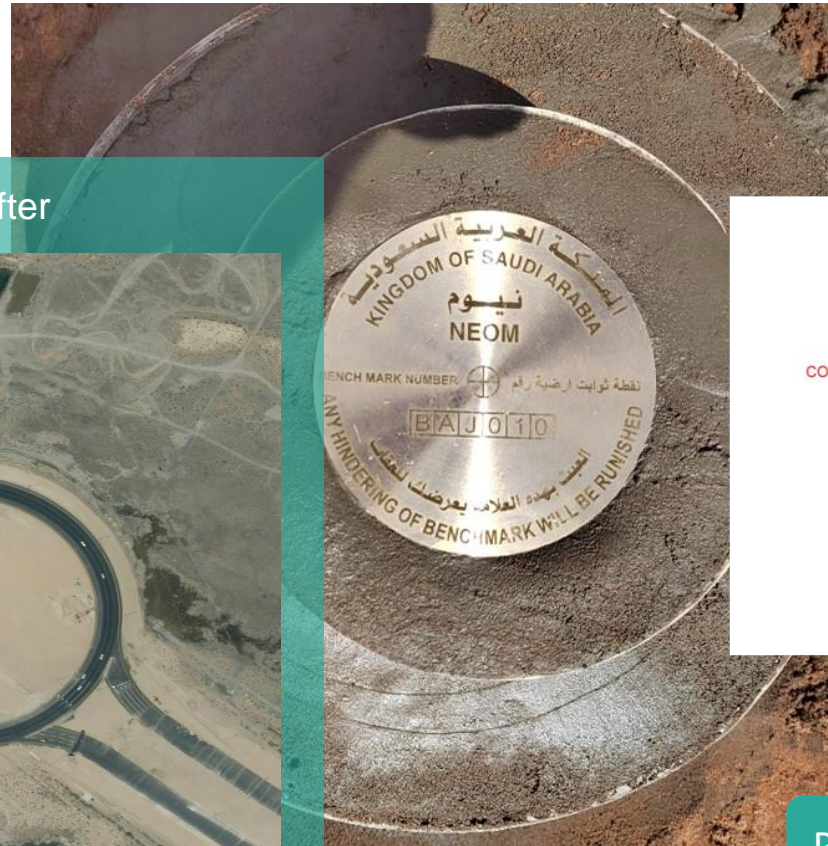
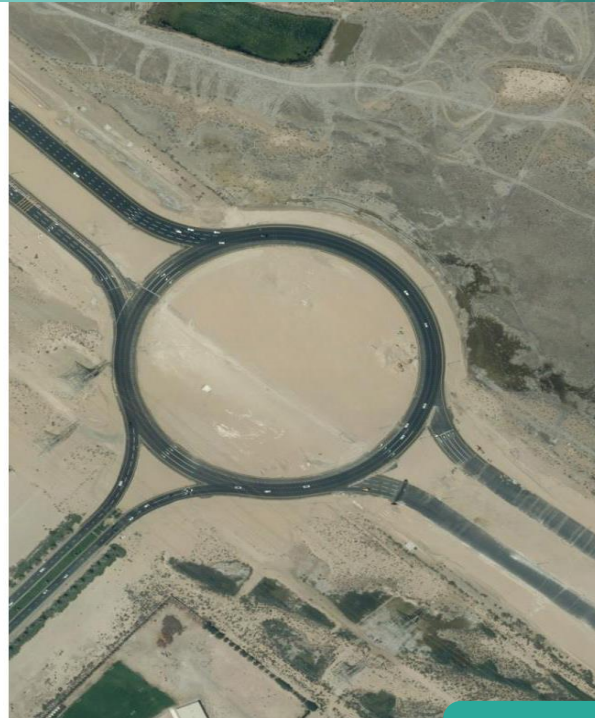
3D Modelling

AMAI's OUTPUTS

Before



After



Change Detection

Permanente GCPs Installation

SATELLITE IMAGERY OUTPUTS

AMAI able to provide a high-resolution satellite imagery at 30cm and 50cm, in mono and stereo mode for photogrammetric mapping production.

SSO able to provide the below outputs,

Orthophoto

Contour Lines

DEM

DSM

Mapping Production



REFERENCE PROJECTS

AMAI has been honored to implement a several drone topographic survey projects for:



- Some Islands in the Red Sea
- Kadompl Island in the Red Sea
- Kadeen Island in the Red Sea



نيوم NEOM

- Area in Jabal Al Louz - 11,5 km²
- Shaqray Mountain - 125 km²
- Area on Gulf of Aqaba - 208 km²
- Pumped Hydro Storage Sites - 158 km²
- Al Swrah Site and Um Asila Island
- Ground Detailed Survey for Base Camp
- Drone Videography for 17 Heritages Sites



- Area in Turaif – 180 km²



- Transmission Power Line in Al Baha – 67 km



- Holy Masha'ar Area
Holy Makkah – 127 km²



- Ground Topographic Survey and Volume Calculation for a Several Areas in Taif, Dammam, Toubouk, Hail, Najran, Jazan, Qassim, Baha, Asir, Riyadh



- Satellite Imagery Services for 21 Sites in Jeddah City - 420 Km²

REFERENCE PROJECTS

AMAI has been honored to implement a several drone topographic survey projects for:



- Drone Survey and Volume Calculation of the Raw Materials



Drone Topographic and Detailed Survey for Tafkha wild Park



- Drone Topographic and Detailed Survey for Riyadh Course



- Drone Survey for a Three Parks in Riyadh (Arid , Rimal , Badr)
- Drone Survey for a Two Parks in Riyadh



- Drone Survey and Volume Calculation for an Area in Riyadh



- Drone Survey for Cloud Town, Garden Areas and the Roads Network



- Drone Topographic Survey for an Srea in Al Ula – 82 km² , 20 linear km



- Drone Topographic Survey for Native Plants Nursery National Parks – 47 km²



- Drone Survey and Volume Calculation of the Raw Materials

For any information, please contact us via:

00966 11 400 1064
00966 59 3900 432

info@arabianmaps.com.sa
sobhi@arabianmaps.com.sa

www.arabianmaps.com.sa



شركة الخرائط العربية للتصوير الجوي
ARABIAN MAPS AERIAL IMAGING COMPANY